

# NETARTS BAY

## CAPE LOOKOUT & OCEAN VIEWS



Holly Heights is a small deeded subdivision featuring custom 3 bedroom, 2 1/2 bath residences with open space and spectacular views of Cape Lookout, Netarts Bay and the Pacific Ocean.

### Quality Custom Features Include:

- ◆ Open floor plans
- ◆ Hardwood floors
- ◆ Tile kitchen counters
- ◆ Tumbled marble bathrooms
- ◆ Built in vacuum system
- ◆ Custom cabinets
- ◆ Rounded wall corners
- ◆ Vaulted bedroom ceilings
- ◆ Jetted tub in master bedroom

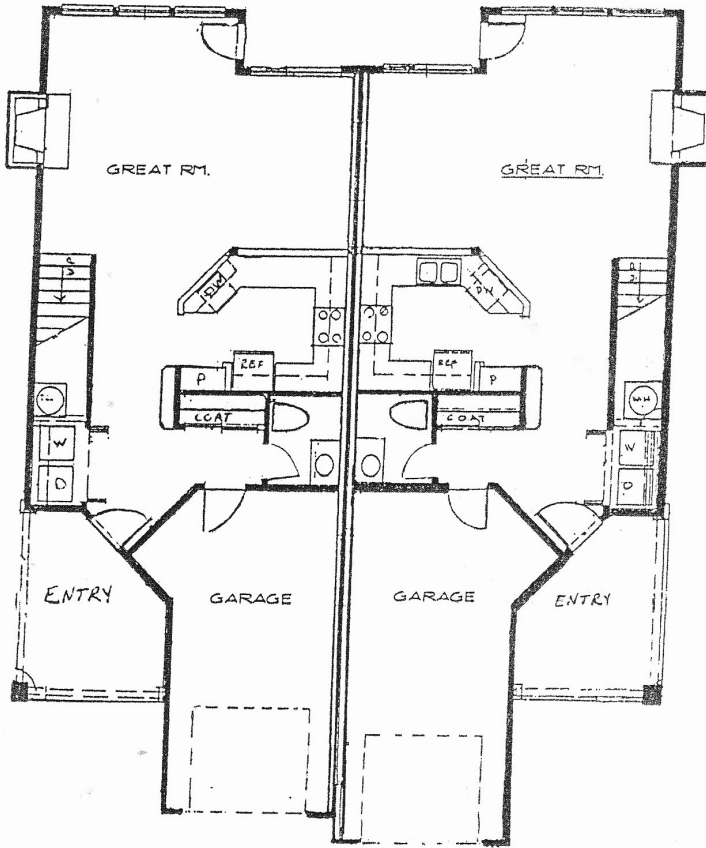
- ◆ Raised panel doors
- ◆ Underground utilities
- ◆ Skylight over open stairway
- ◆ Deadbolt locks on exterior doors
- ◆ Private road access
- ◆ Remote controlled garage door
- ◆ Stamped concrete driveways
- ◆ Cast iron sink with garbage disposal
- ◆ Eating bar for casual dining

- ◆ Vinyl windows and soffits
- ◆ Master bedroom walk in closet
- ◆ 2 headed shower in master bath
- ◆ Pull down ladder for storage area
- ◆ Ocean view patios on main level
- ◆ Ceiling fan above stairway
- ◆ Forced air heat
- ◆ Pellet stove in living room
- ◆ Walking distance to the beach



# HOLLY HEIGHTS RENDERINGS

Lower Levels  
Left & Right Units



Upper Levels  
Left & Right Units

