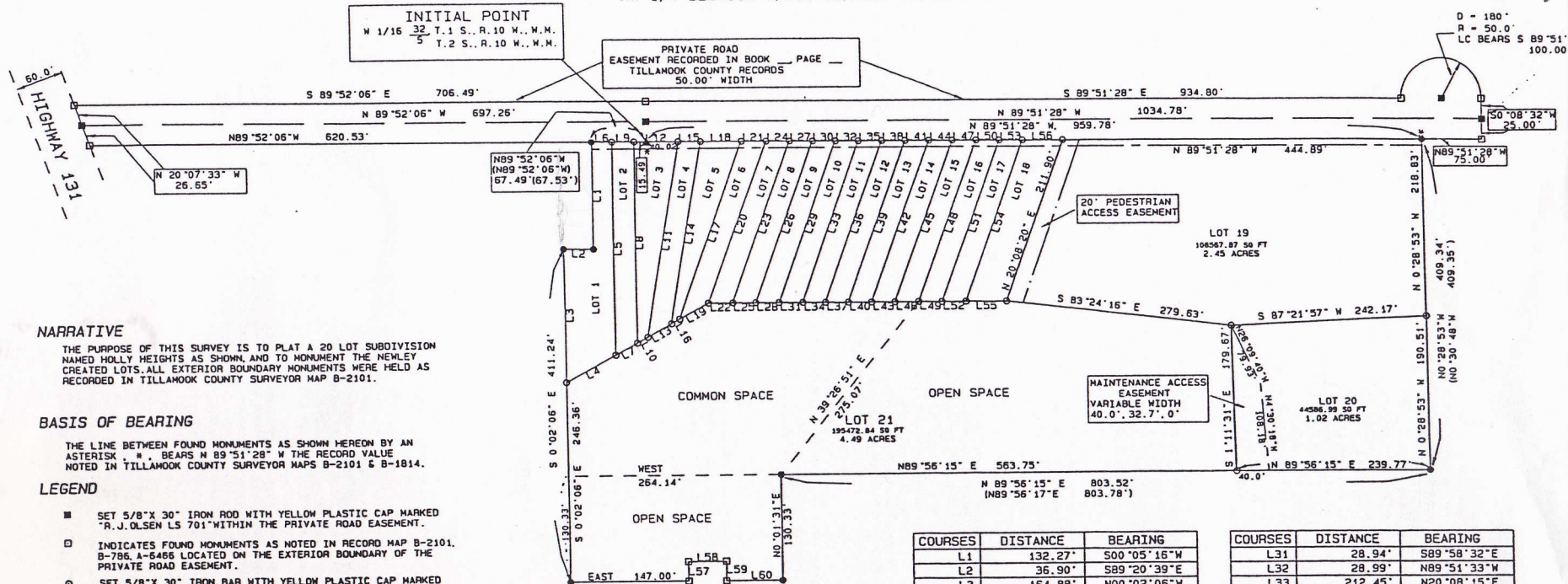


# HOLLY HEIGHTS SUBDIVISION

NW 1/4 SECTION 5; T.2 S.; R.10 W.; W.M.



**NARRATIVE**

THE PURPOSE OF THIS SURVEY IS TO PLAT A 20 LOT SUBDIVISION NAMED HOLLY HEIGHTS AS SHOWN, AND TO MONUMENT THE NEWLY CREATED LOTS. ALL EXTERIOR BOUNDARY MONUMENTS WERE HELD AS RECORDED IN TILLAMOOK COUNTY SURVEYOR MAP B-2101.

**BASIS OF BEARING**

THE LINE BETWEEN FOUND MONUMENTS AS SHOWN HEREON BY AN ASTERISK \* N BEARS N 89°51'28" W THE RECORD VALUE NOTED IN TILLAMOOK COUNTY SURVEYOR MAPS B-2101 & B-1814.

**LEGEND**

- SET 5/8" X 30" IRON ROD WITH YELLOW PLASTIC CAP MARKED "R.J. OLSEN LS 701" WITHIN THE PRIVATE ROAD EASEMENT.
- INDICATES FOUND MONUMENTS AS NOTED IN RECORD MAP B-2101, B-786, A-5486 LOCATED ON THE EXTERIOR BOUNDARY OF THE PRIVATE ROAD EASEMENT.
- SET 5/8" X 30" IRON BAR WITH YELLOW PLASTIC CAP MARKED "R.J. OLSEN LS 701" AS SUBDIVISION LOT CORNER MONUMENTS.
- INDICATES FOUND MONUMENTS AS NOTED IN RECORD MAP B-2101 B-1814, A-7155, A-2443 LOCATED ON THE EXTERIOR BOUNDARY OF HOLLY HEIGHTS SUBDIVISION.
- ▲ FOUND BRASS CAP IN CONCRETE-SURVEY B786, B2101, W 1/16 32 T.1 S., R.10 W., W.M.
- ( ) INDICATES RECORD VALUE T.C.S. MAP B-2101 WHICH DIFFERS FROM MEASURED VALUE.

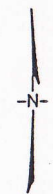
- INDICATES 8.0 FOOT UTILITY EASEMENT LIMIT
- - - DENOTES LINE SEPARATING COMMON SPACE AND OPEN SPACE IN LOT 21.
- INDICATES MAINTENANCE EASEMENT BOUNDARY LIMIT
- - - INDICATES PEDESTRIAN ACCESS EASEMENT BOUNDARY LIMIT

LOT NUMBER	LOT SIZE
1	12,427.50 FT
2	6,909
3	8,359
4	6,386
5	6,592
6	6,286
7	5,872
8	5,743
9	5,739
10	5,782
11	5,736
12	5,723
13	5,727
14	5,731
15	5,723
16	5,721
17	5,723
18	9,954

REGISTERED PROFESSIONAL LAND SURVEYOR

OREGON JULY 6, 1985 ROBERT J. OLSEN 701

RENEWED THRU 12/31/98 ROBERT J. OLSEN 3906 THIRD STREET TILLAMOOK, OREGON 97141 503-842-4394



SCALE : 1" = 100'  
DATE : SEPTEMBER 2, 1997

COURSES	DISTANCE	BEARING
L1	132.27'	S00°05'16"W
L2	36.90'	S89°20'39"E
L3	164.88'	N00°02'06"W
L4	69.92'	N61°35'46"E
L5	263.40'	N00°06'30"E
L6	25.00'	N89°51'28"W
L7	30.68'	N61°35'37"E
L8	248.74'	N00°07'03"E
L9	27.00'	N89°51'27"W
L10	14.93'	S61°36'03"W
L11	245.31'	N10°06'42"E
L12	55.69'	N89°51'28"W
L13	34.40'	N61°35'43"E
L14	228.63'	N10°07'46"E
L15	27.40'	N89°51'28"W
L16	11.66'	S61°35'57"W
L17	233.69'	N20°08'43"E
L18	50.53'	N89°51'24"W
L19	41.24'	N61°35'46"E
L20	213.38'	N20°37'48"E
L21	30.98'	N89°51'35"W
L22	30.33'	S89°58'34"E
L23	212.68'	N20°09'50"E
L24	28.45'	N89°51'22"W
L25	28.81'	S89°58'33"E
L26	212.58'	N20°08'31"E
L27	28.70'	N89°51'28"W
L28	28.80'	S89°58'33"E
L29	212.49'	N20°07'12"E
L30	28.69'	N89°51'28"W

COURSES	DISTANCE	BEARING
L31	28.94'	S89°58'32"E
L32	28.99'	N89°51'33"W
L33	212.45'	N20°08'15"E
L34	28.78'	S89°58'33"E
L35	28.71'	N89°51'28"W
L36	212.37'	N20°07'31"E
L37	28.67'	S89°58'33"E
L38	28.71'	N89°51'28"W
L39	212.33'	N20°08'27"E
L40	28.73'	S89°58'33"E
L41	28.71'	N89°51'28"W
L42	212.27'	N20°08'29"E
L43	28.78'	S89°58'33"E
L44	28.71'	N89°51'28"W
L45	212.19'	N20°07'45"E
L46	28.72'	S89°58'32"E
L47	28.71'	N89°51'28"W
L48	212.13'	N20°07'55"E
L49	28.72'	S89°58'33"E
L50	28.71'	N89°51'28"W
L51	212.07'	N20°08'06"E
L52	28.75'	S89°58'33"E
L53	28.71'	N89°51'28"W
L54	212.00'	N20°07'49"E
L55	49.99'	S89°58'35"E
L56	49.99'	N89°51'28"W
L57	24.00'	S00°00'00"W
L58	47.00'	N90°00'00"W
L59	24.00'	N00°00'00"E
L60	70.00'	N90°00'00"W